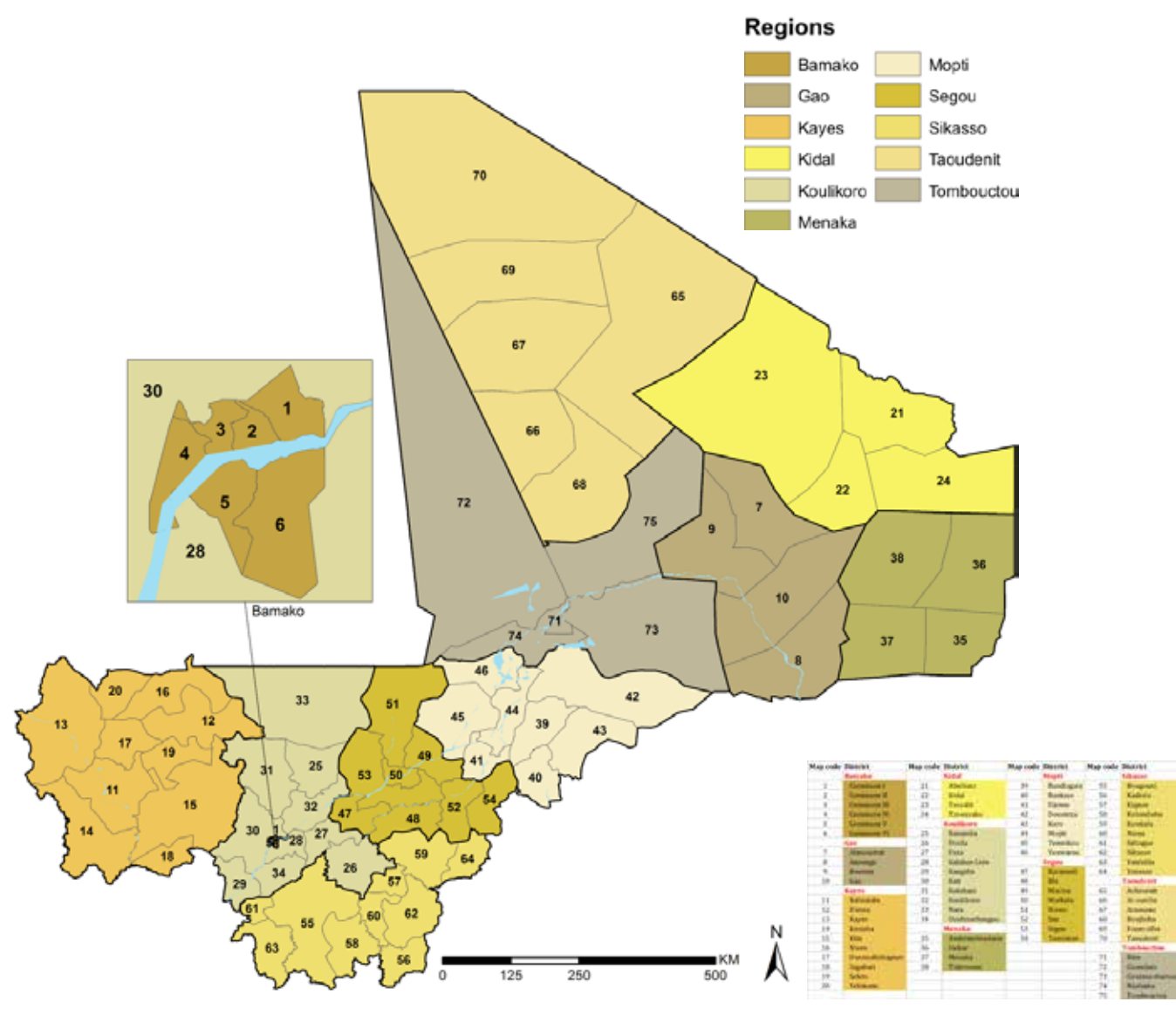


# Mali epidemiology and control profile

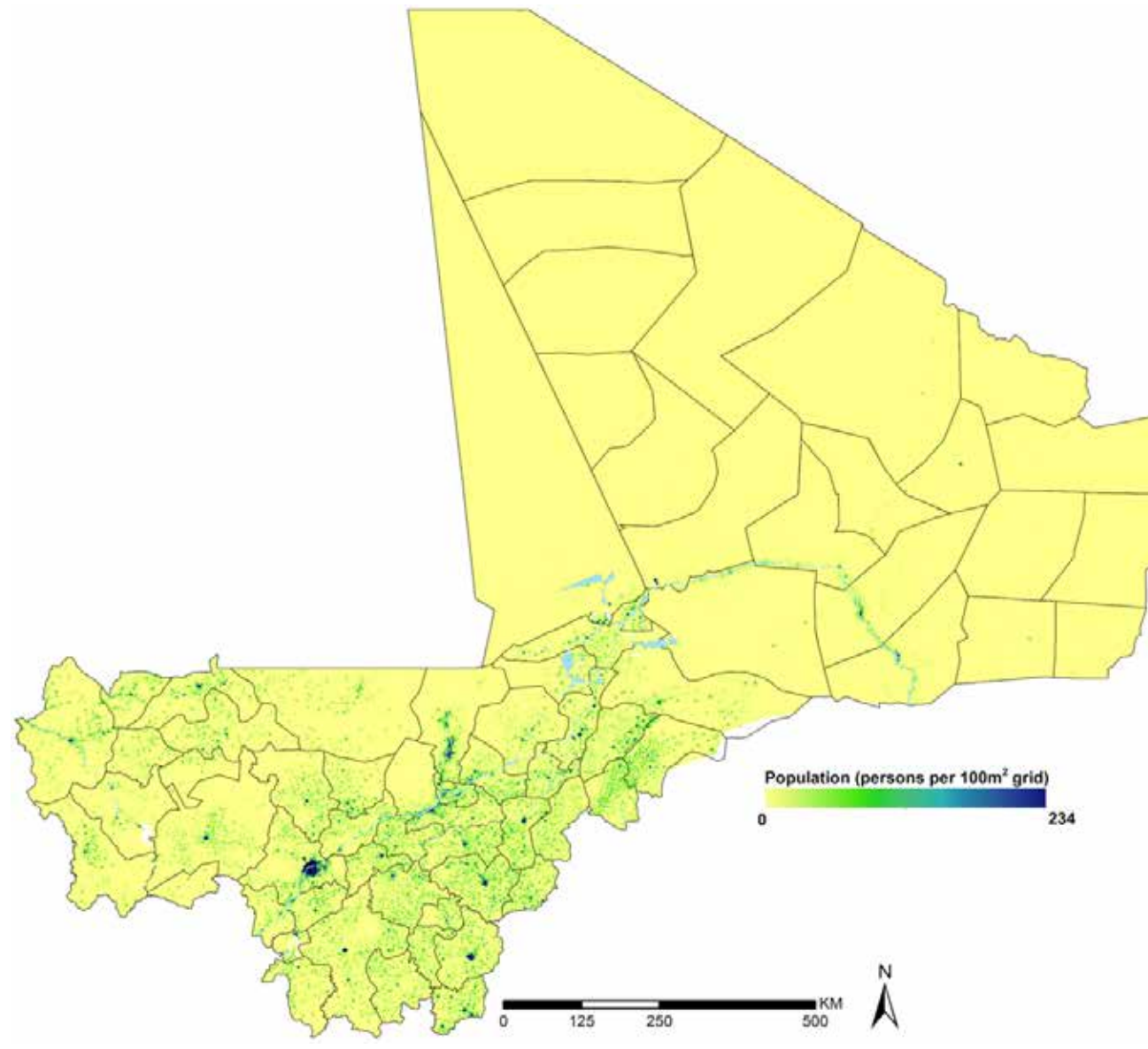
The LINK programme is a partnership between the London School of Hygiene & Tropical Medicine, KEMRI Wellcome Trust Research Programme, WHO Regional Office for Africa and Programme National de Lutte contre le Paludisme to assemble the epidemiological evidence base to support a targeted approach to malaria control in Mali.

## Context

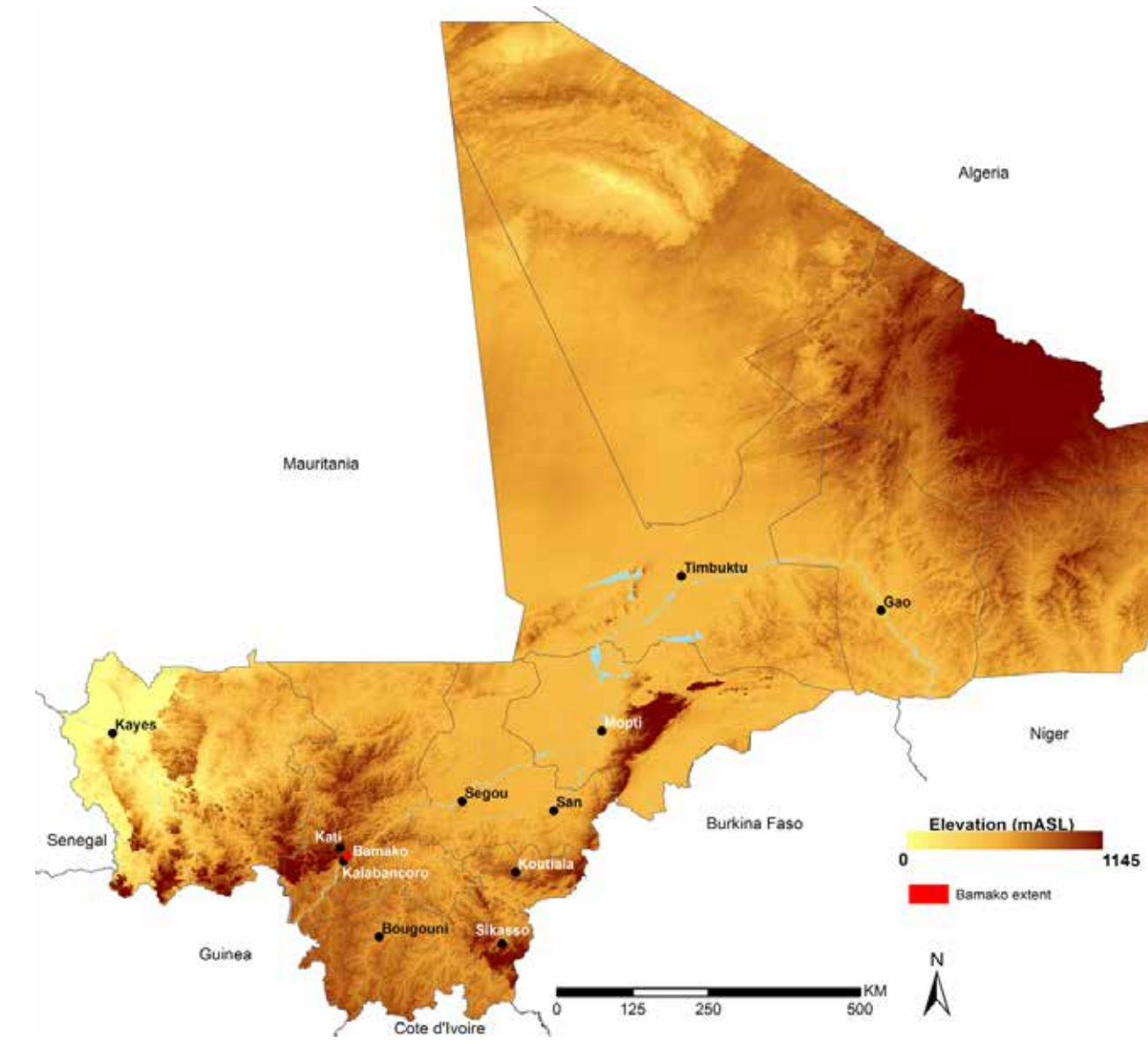
Health districts



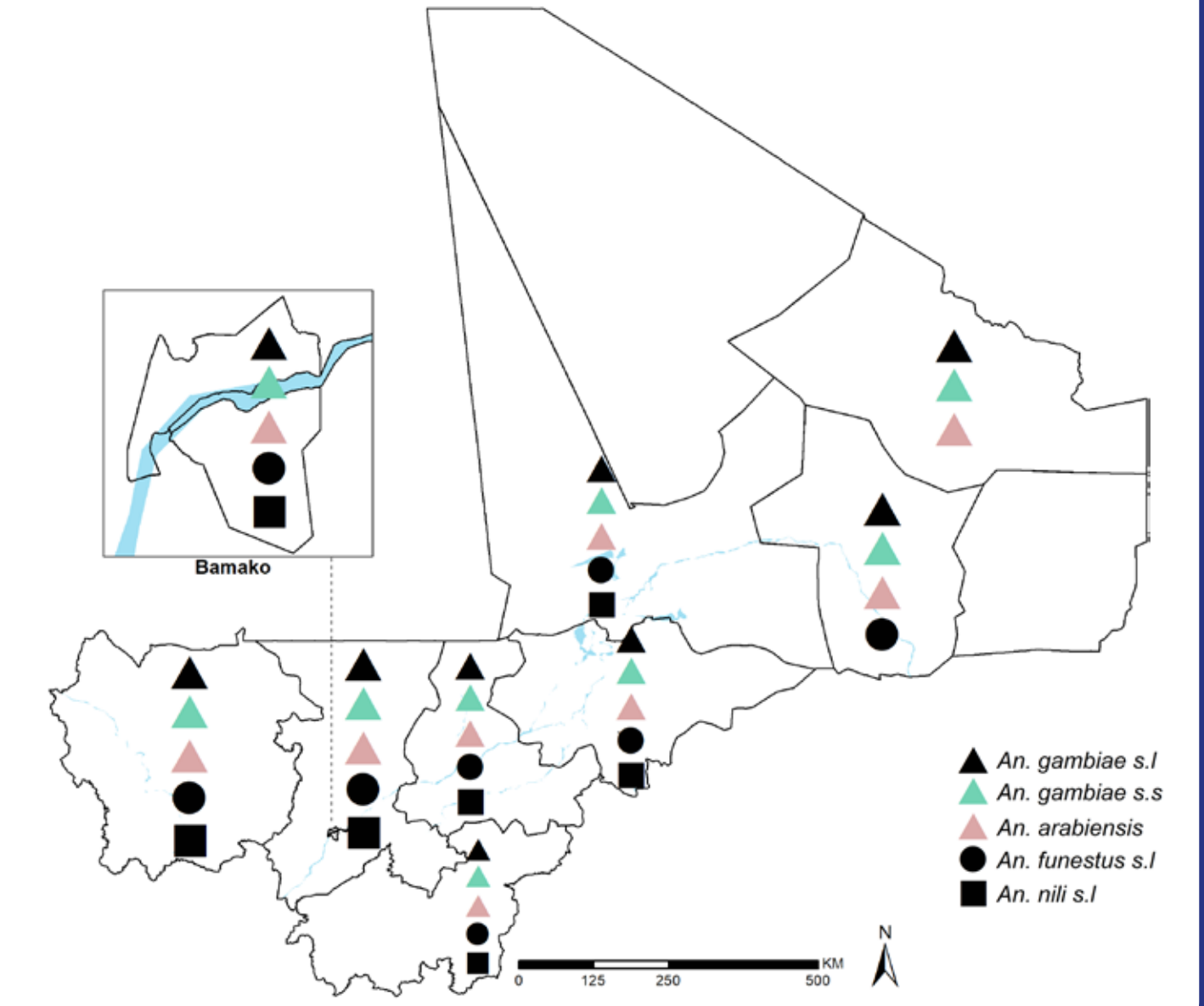
Population density and distribution



Major cities, elevations and rivers

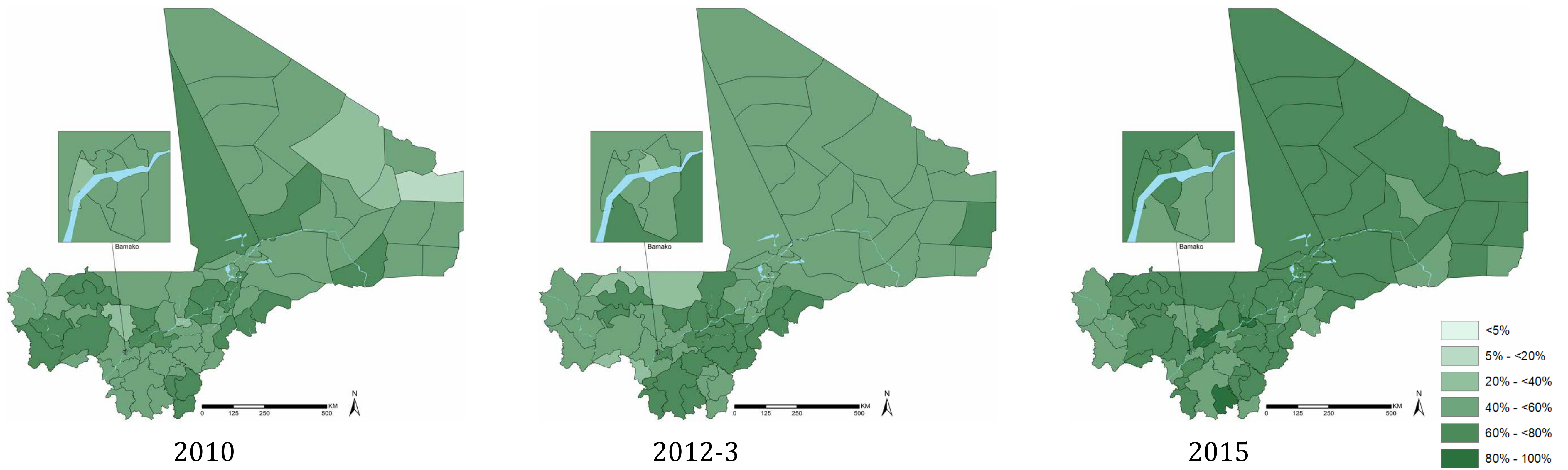


Identified mosquito species by region

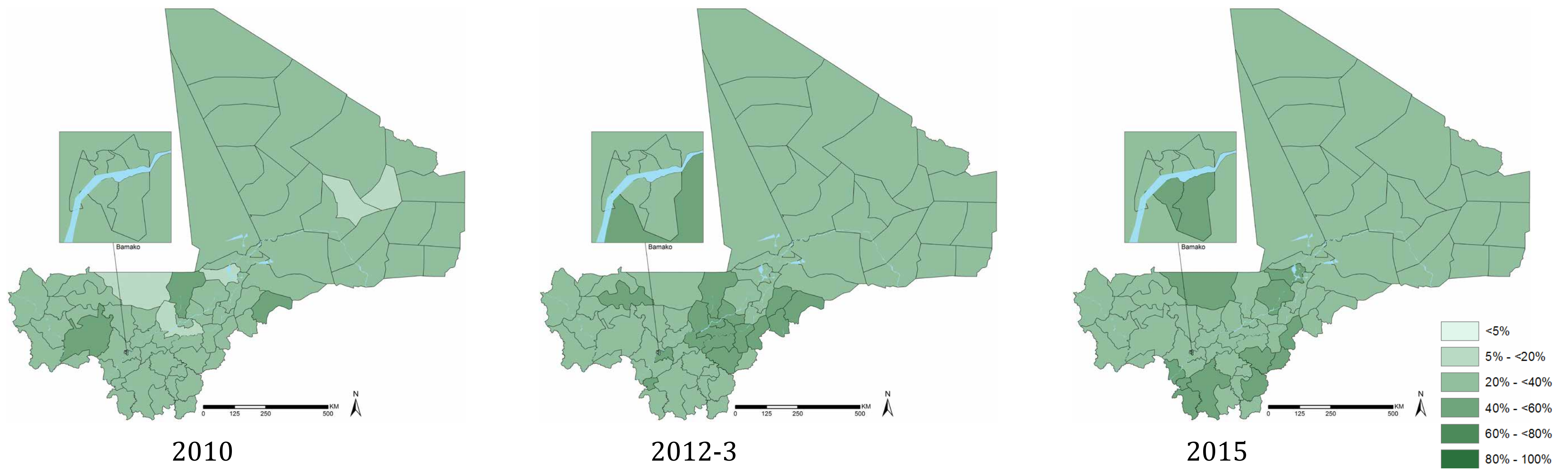


## Output

Percent of population under insecticide-treated nets (ITNs)

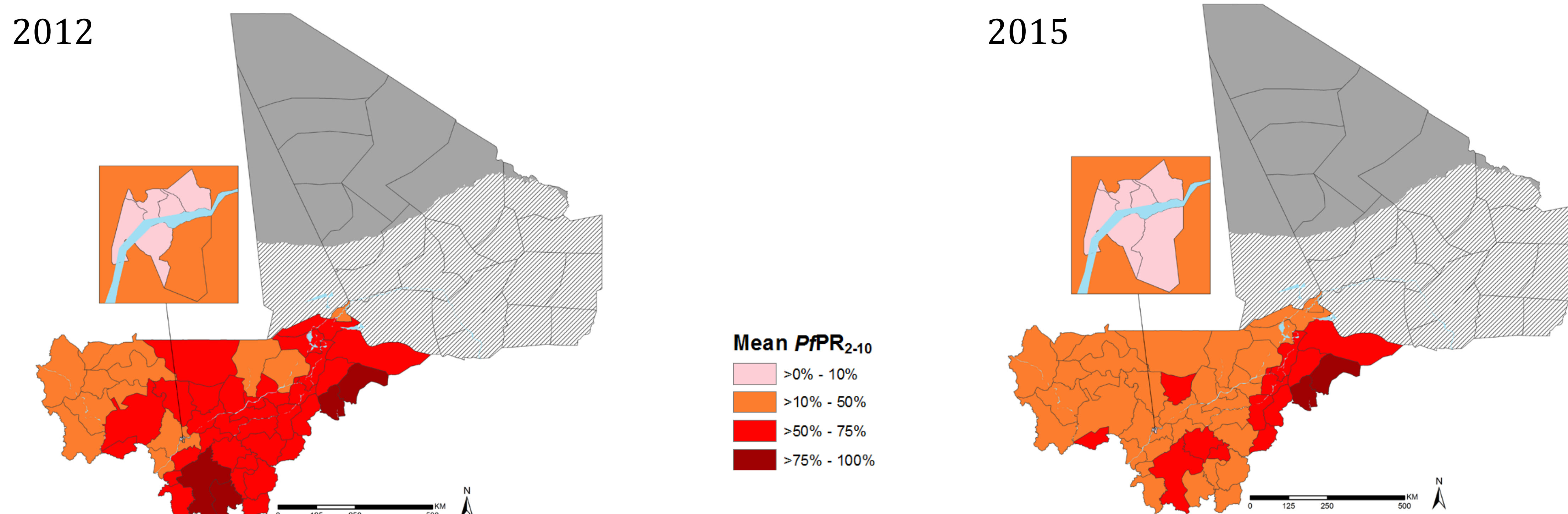


Proportion of households with at least 1 ITN for every 2 persons



## Impact

Malaria risk: Interpolated prediction of *Plasmodium falciparum* prevalence (PfPR<sub>2-10</sub>)



KEMRI | Wellcome Trust



LONDON SCHOOL OF HYGIENE & TROPICAL MEDICINE



www.linkmalaria.org